

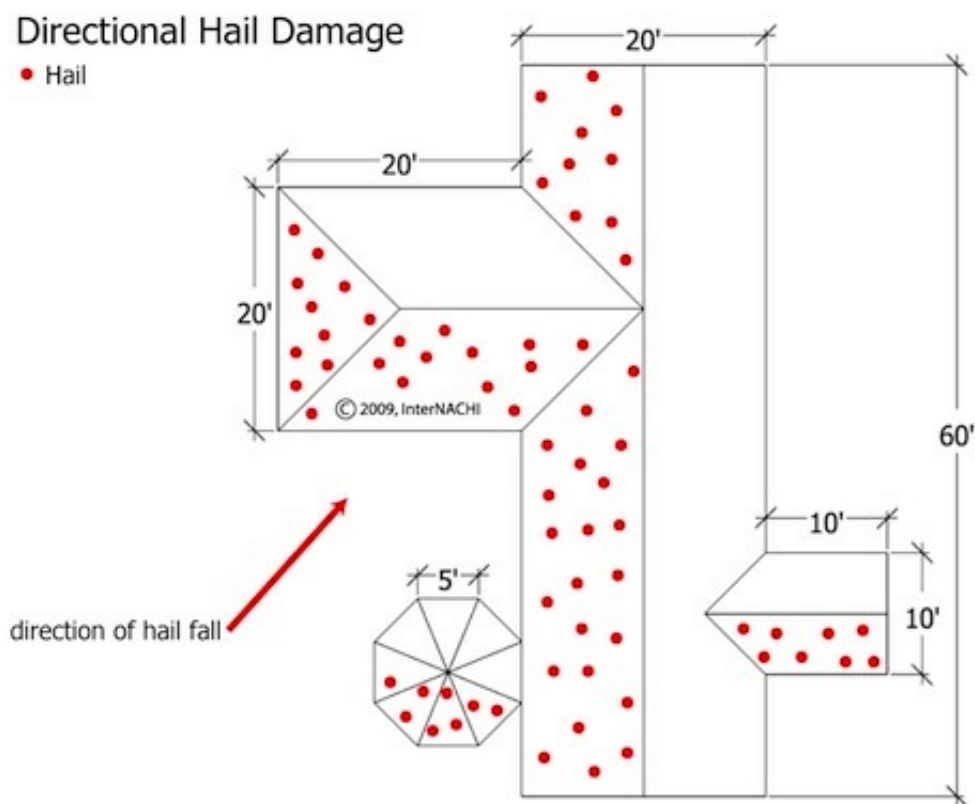
Mastering Roof Inspections: Hail Damage, Part 8

by Kenton Shepard and Nick Gromicko

The purpose of the series "Mastering Roof Inspections" is to teach home inspectors, as well as insurance and roofing professionals, how to recognize proper and improper conditions while inspecting steep-slope, residential roofs. This series covers roof framing, roofing materials, the attic, and the conditions that affect the roofing materials and components, including wind and hail.

FORENSICS of HAIL DAMAGE, Part 2

Directionality



We've talked about viewing evidence of a storm's direction by examining collateral damage. The same is true with the roof. You'll usually see that damage is more serious on slopes facing the same direction. This is the direction from which the hail came. If opposite-facing slopes both have damage, you may be looking at damage from different storms. It's possible that hail from one storm carried more impact-energy than hail from another. Look for differences in the age of damage.

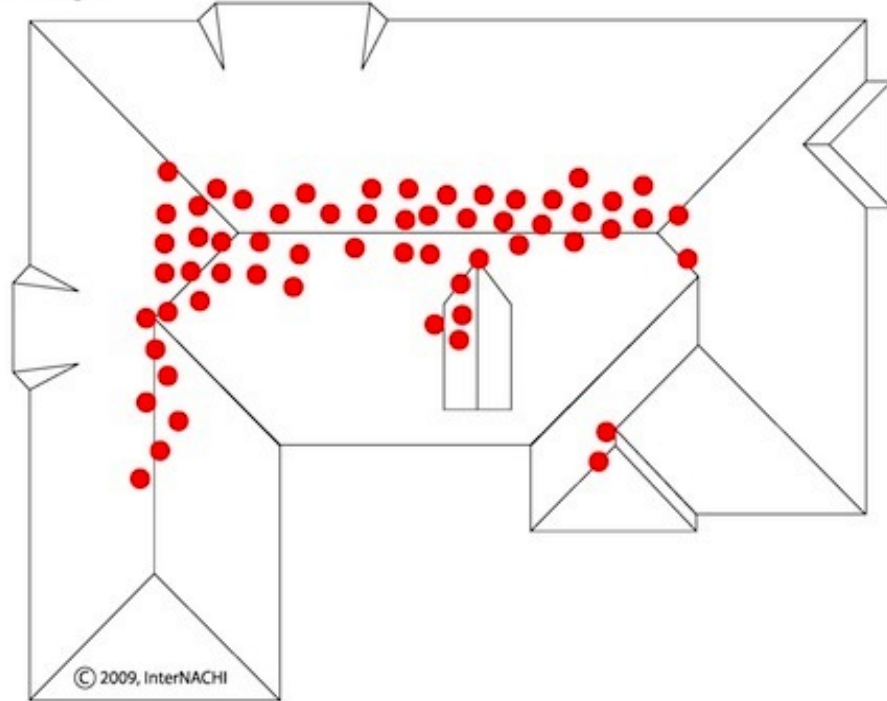
It's also possible that there was little wind and that hail fell nearly straight down.

Random Fall Pattern

The fall pattern should be random. Hail falls from thousands of feet in the air, so the pattern of damage across the roof should be random. If you see geometrical patterns of damage, examine the damage closely for evidence of causes other than hail.

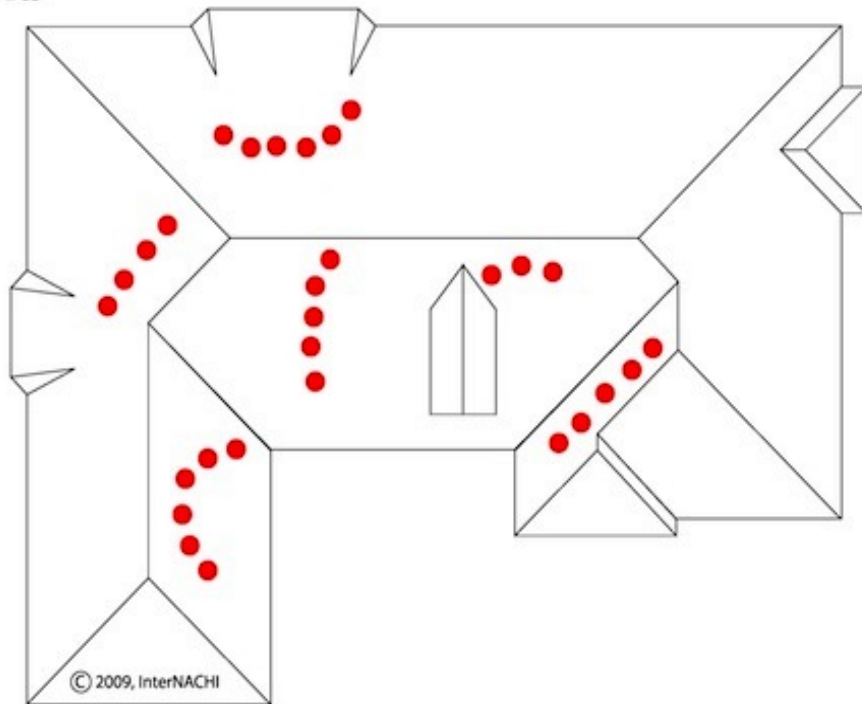
Intentional Damage

Hammer Marks Mimic Hail Damage
Marks Avoiding Roof Edges



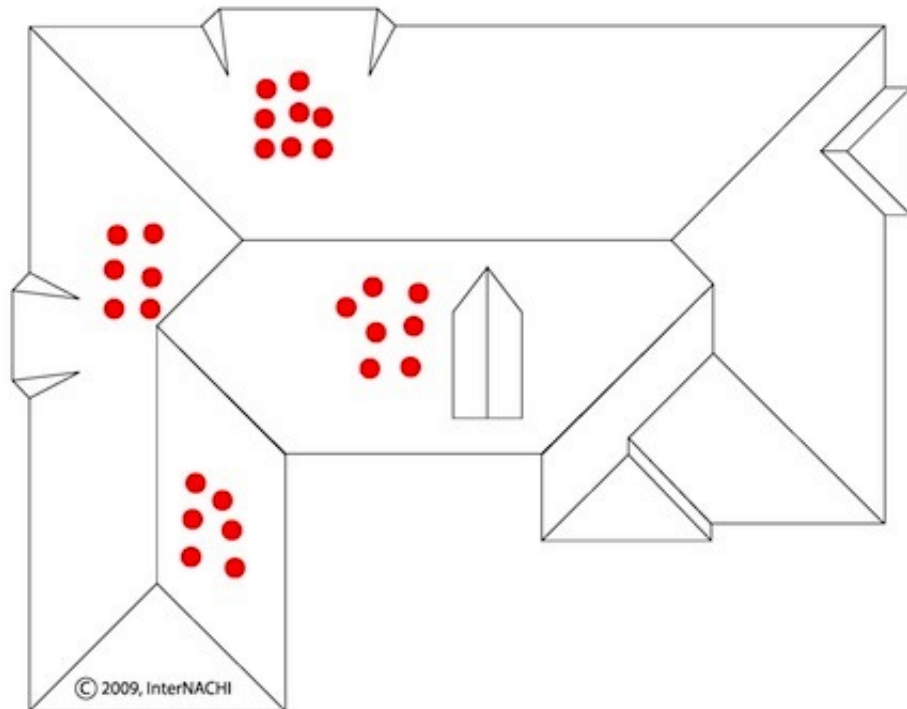
Roofs are sometimes intentionally damaged by those wanting to defraud insurance companies to get a new roof. If you see damage that is concentrated in areas away from the roof edge,

Hammer Marks Mimic Hail Damage
Marks in Lines or Arcs



or areas in which damage appears as a series of short arcs, or ...

Hammer Marks Mimic Hail Damage
Marks in Groups



...damage which appears as separate groups, you should examine individual marks closely for signs of intentional damage. The details of intentional damage will vary with the type of roof-covering material.

Again, damage should be random across the roof. Hailstones may hit any part of the roof-covering material, including its edges, and you may see one indentation overlapping another. If you see damage which appears only in the same part of different shingles, look closely for evidence of other types of damage.

Age of Damage

The appearance of older damage usually is indicated by color. Hailstrikes often remove oxidation and particulates or expose new material, leaving the area of the strike a different color from the surrounding material.

Over time, the damaged materials will re-oxidize and become re-covered with particulates. So, although some evidence of damage may remain visible, older damage may look different from newer damage. The appearance of the difference will vary with the type of roof-covering material installed.

Learn how to master a roof inspection from beginning to end by reading the entire InterNACHI series: Mastering Roof Inspections. (<http://www.nachi.org/mastering-roof-inspections.htm>)



(<http://inspectorseek.com/>)

(<http://www.inspectorseek.com/>)

Take InterNACHI's free, online Roofing Inspection Course

(<http://www.nachi.org/roofingcoursereleased2005.htm>)

Mastering Roof Inspections (<http://www.nachi.org/mastering-roof-inspections.htm>)

Roofing Underlayment Types (<http://www.nachi.org/underlayment-types.htm>)

Inspecting Underlayment on Roofs (<http://www.nachi.org/underlayment-general.htm>)

Fall-Arrest Systems (<http://www.nachi.org/fall-arrest-systems.htm>)

Roofing (consumer-targeted) (<http://www.nachi.org/roofs.htm>)

More inspection articles like this (<http://www.nachi.org/articles.htm>)



InterNACHI
1750 30th St Ste 301
Boulder, CO 80301

[Contact InterNACHI \(http://www.nachi.org/contact.htm\)](http://www.nachi.org/contact.htm)

The entire contents of this site © 2006-2015 InterNACHI. All rights reserved.
InterNACHI is a registered trademark of the International Association of Certified Home Inspectors, Inc.
[Terms of Use \(/termsfuse.htm\)](/termsfuse.htm) | [Find an Inspector \(http://www.inspectorseek.com\)](http://www.inspectorseek.com)